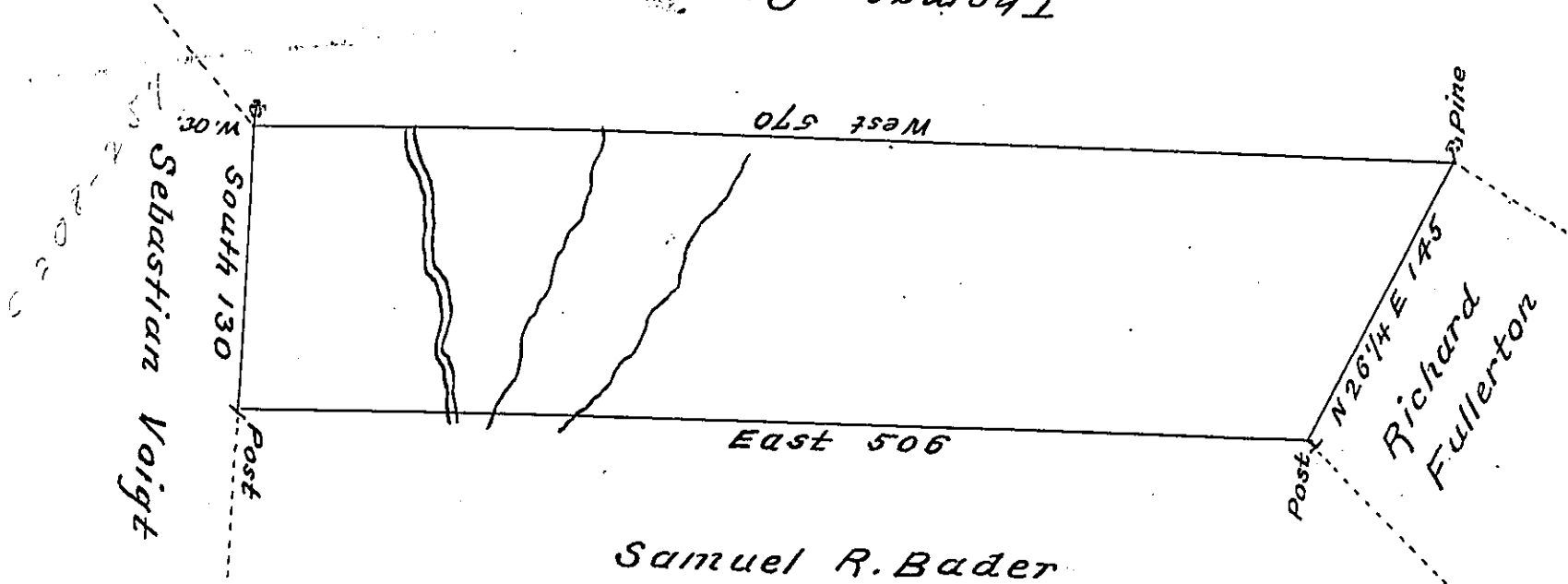


Thomas Craig Esq.



Samuel R. Bader

C 17-13

By Virtue of a Warrant dated the 3^d August 1793 Surveyed the
 19th June 1794 to John Leech the above described Tract of Land Situate
 on the Waters of Pine Run about one mile East of the Shingle road in
 the County of Northampton Containing four hundred and twelve acres
 sixty one perches and the allowance of Six $\frac{1}{2}$ Cent &c.

$\frac{1}{2}$ Geo: Palmer D.S.

To Daniel Brodhead Esq. }
 Surveyor General. }

IN TESTIMONY that the above is a copy of the original remaining on file in
 the Department of Internal Affairs of Pennsylvania, made
 conformably to an Act of Assembly approved the 16th day of
 February, 1833, I have hereunto set my Hand and caused
 the Seal of said Department to be affixed at Harrisburg,
 this twenty-fourth day of August 1905.

Isaac D. Brown
 Secretary of Internal Affairs.